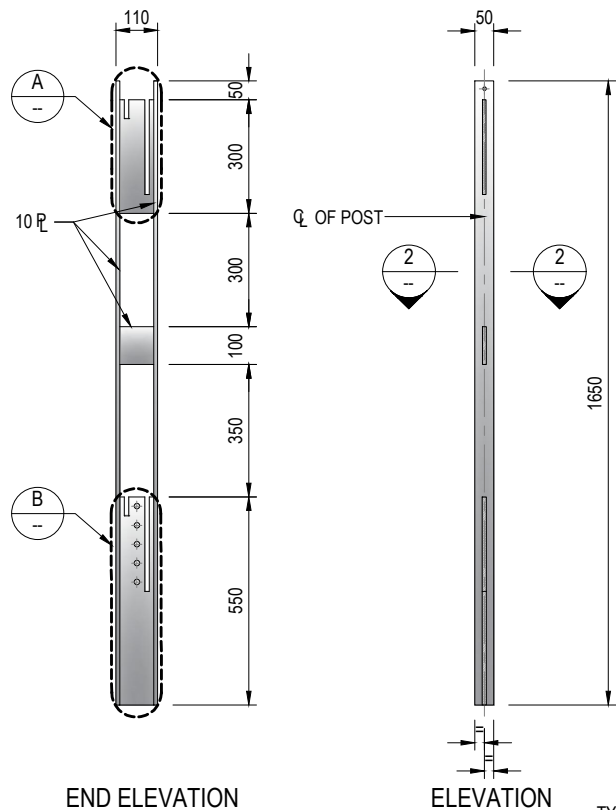


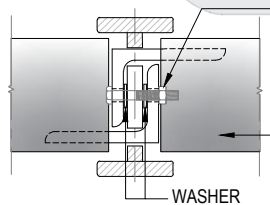
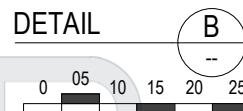
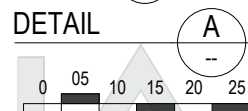
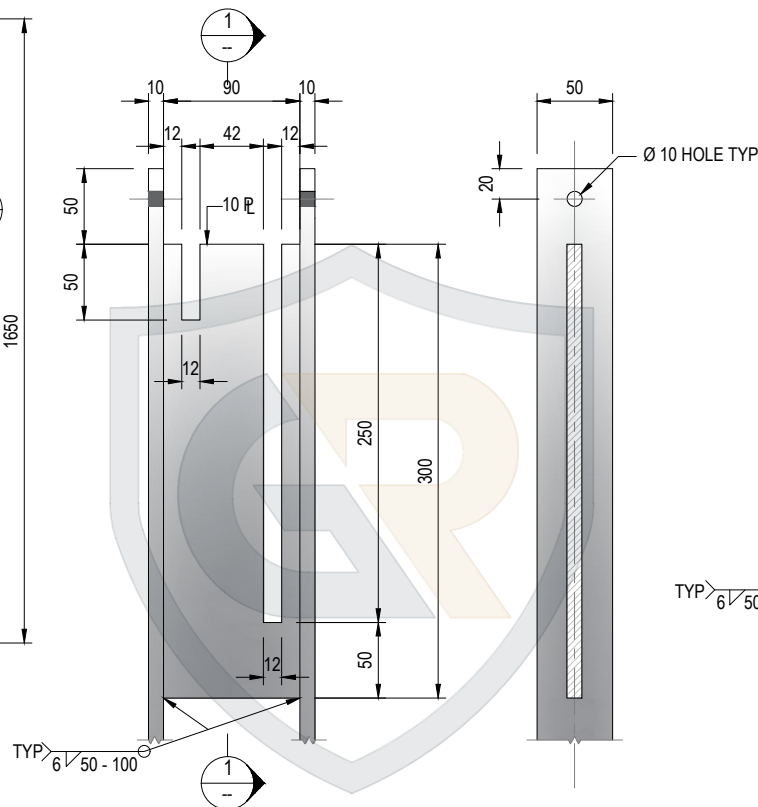
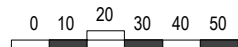
| NO. | DESCRIPTION | QTY |
|-----|-------------|-------|
| 01 | ***** | ***** |
| 02 | ***** | ***** |
| 03 | ***** | ***** |
| 04 | ***** | ***** |
| 05 | ***** | ***** |
| 06 | ***** | ***** |
| 07 | ***** | ***** |
| 08 | ***** | ***** |
| 09 | ***** | ***** |
| 10 | ***** | ***** |

| NO. | DESCRIPTION |
|-----|-------------|
| | |
| | |
| | |
| | |
| | |
| | |
| | |
| | |
| | |
| | |

| FINISH DETAIL | | WEIGHT | |
|---------------------|-------------|-------------|--------------|
| MATERIAL GRADE | ----- | | |
| FIRST COATING TYPE | ----- | COLOUR | ----- |
| SECOND COATING TYPE | ----- | COLOUR | ----- |
| DRAWING TITLE | RMSPP0-I/IG | | SHEET NO. |
| DATE | MAR 2023 | SCALE | AS SHOWN |
| DRAWN BY | SUMMIT CAD | PAPER SIZE | A4 |
| DESIGNED | SUMMIT CAD | PROJECT NO. | |
| APPROVED | STEVE G. | REF NO. | |
| | | | TOTAL SHEETS |
| | | | 1 |



END ELEVATION
ELEVATION
INTERMEDIATE POST

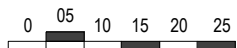


M10 BOLT, NUT AND WASHERS.
LENGTH 30 WITH SINGLE RAIL
CONNECTION LENGTH 40 WITH
DOUBLE RAIL CONNECTION

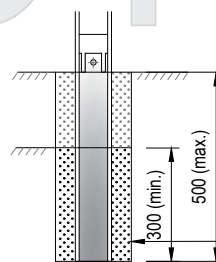
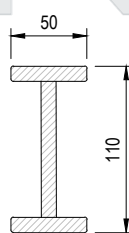
FOR DETAILS OF ANGLE
BRACKETS AND PANEL SEE
PANEL DRAWINGS.

WASHER

**DETAIL OF BOTTOM
RAIL CONNECTION**



FENCE LIMITED TO GRADES OF UP TO 10%.



Ø 200 20 MPa
CONCRETE FOOTING
IN SOFT GROUND USE
FOOTING Ø 400, 600 DEEP

FOOTING DETAIL

